

**SONY**

# Hi-Fi Products Service Bulletin

Sony Service Company - Technical Services  
A Division of Sony Corporation of America  
Sony Drive, Park Ridge, New Jersey 07656

**Model:** MHC-2600, TC-H3600

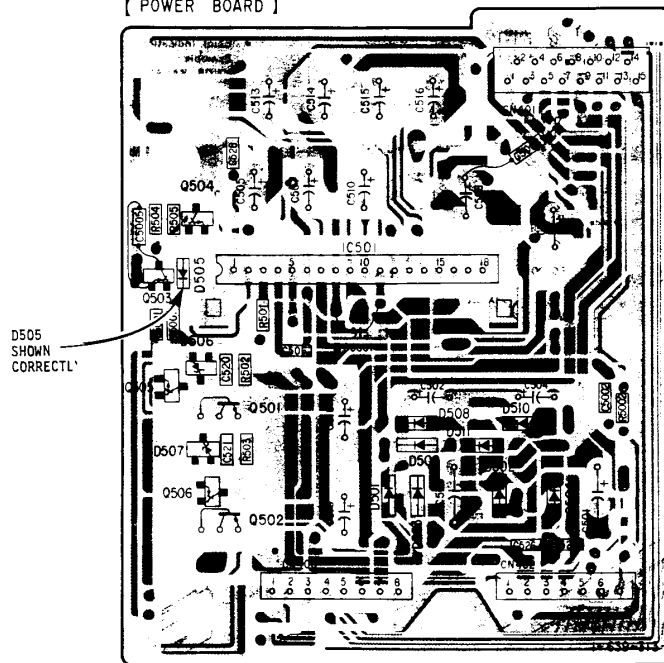
**No. 222**

**Subject:** Display Malfunctions When System Power Is Turned Off. **Date:** November 14, 1991

**Symptom:**  
(13) The display on the TC-H3600 lights up again after the MHC-2600 system power is turned off.

**Solution:** The problem is caused by reverse mounting of D505 in the TC-H3600. To solve the problem, mount D505 correctly as shown in the Service Manual.

[ POWER BOARD ]



Reference: European Service Bulletin HF-03391

PRINTED IN U.S.A.  
CSA-131191-5

Compact System  
CSA-13